

# OUR PARTS OFFER

**AUTOMATION  
TRADER**



# WHY CHOOSE AUTOMATION TRADER?

At Automation Trader, we understand the critical importance of reliability, part availability, and pricing flexibility in the industry.

That is why our offer includes products in various conditions - new, used, refurbished, and repair options - allowing you to choose exactly what you need.

We serve both large industrial plants and small businesses, and our industrial automation components come from renowned manufacturers and are thoroughly tested before sale.

Our offer also includes the "Secure Your Production" package. Instead of reacting to crises, you receive full daily support: from consultancy to parts warehousing. This is a solution for companies that want to operate predictably and without downtime.



# OUR SOLUTIONS FOR YOUR BUSINESS

## DRIVES AND CONTROL



The heart of every automation system. Without efficient drive and control systems, it is hard to imagine a modern production line.

## SENSORS AND MEASUREMENT



Precision that matters. Data is the foundation of automation. Thanks to our measurement solutions and sensors, you can have full control over the process.

## INDUSTRIAL SAFETY



Protection of people and machinery. Safety in the workplace is a priority. We offer proven solutions that meet standards and ensure protection.

# OUR SOLUTIONS FOR YOUR BUSINESS

## MECHANICAL SOLUTIONS



Precision and reliability. Mechanics in automation is not just about gears - it also includes actuators, valves, and precision moving parts.

## INDUSTRIAL ELECTRONICS



Communication and control. Modern industrial electronics is responsible for data exchange, device control, and human-machine interaction.

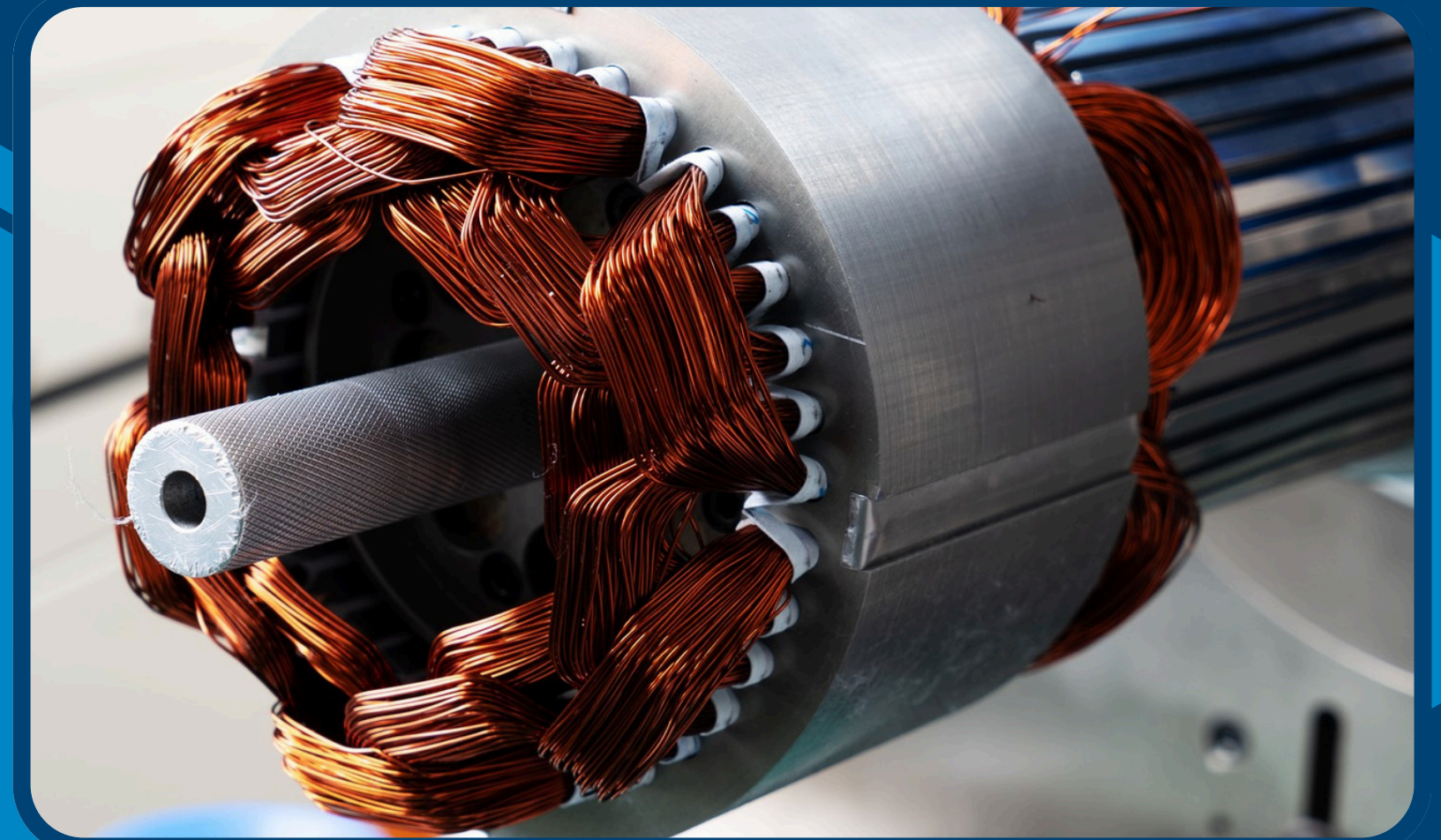
## ELECTRICAL SYSTEMS



The solid foundation of automation. Every automation system requires a proper electrical infrastructure. With us, you will find all the necessary installation components.

# DRIVE SYSTEMS AND CONTROL

- **Electric motors and servomotors**  
Both standard and high-precision, used in applications requiring dynamic control.
- **Inverters and frequency converters**  
Indispensable for regulating motor speed and torque.
- **PLC controllers**  
Programmable controllers in various versions: compact, modular, and with high processing power.
- **Motion control systems**  
Dedicated to more advanced drive systems, such as industrial robots or packaging lines.

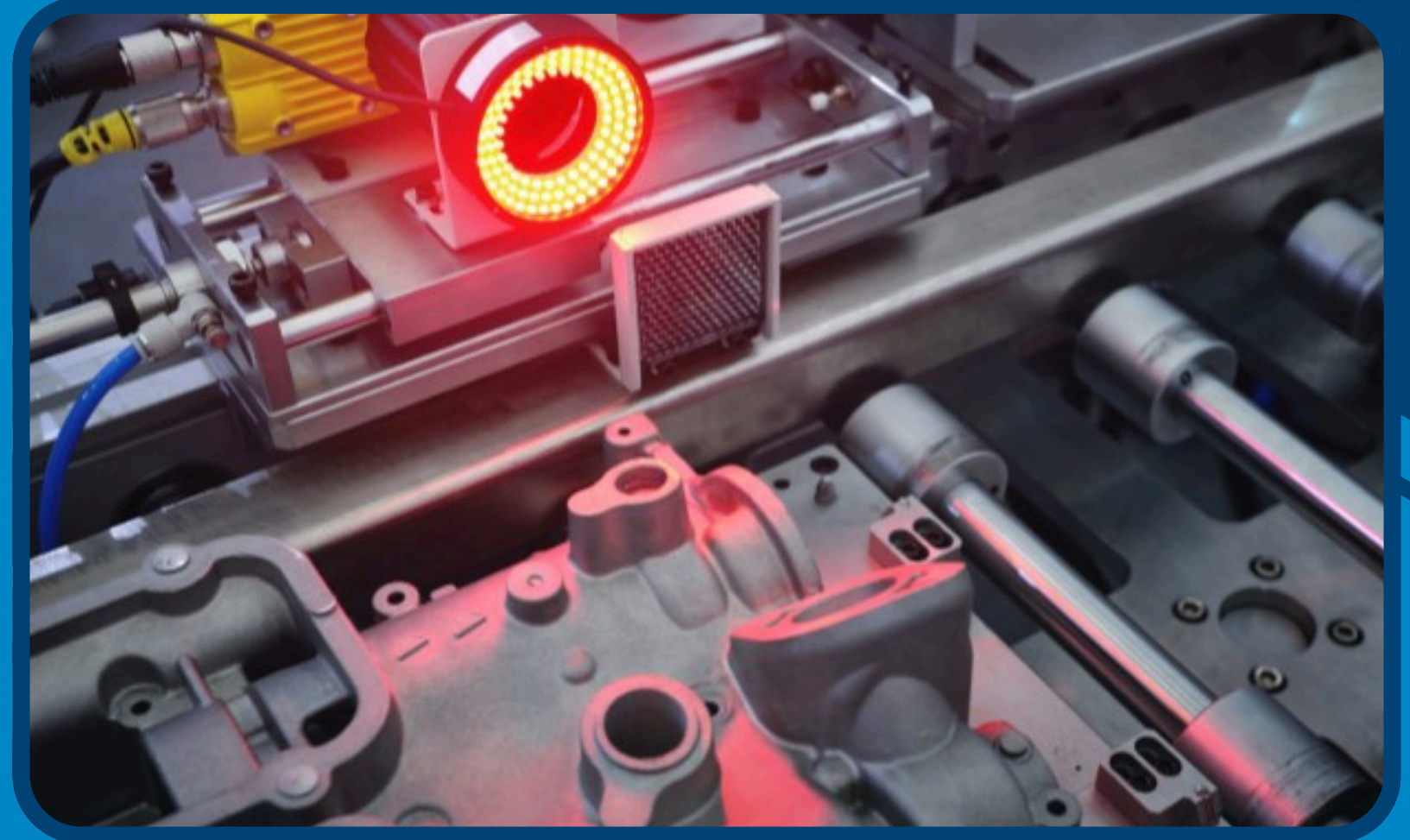


✉ [info@automationtrader.com](mailto:info@automationtrader.com)

☎ +48 32 438 43 56 / +48 799 361 559

# SENSORS AND MEASUREMENT

- **Optical and laser sensors**  
Fast, accurate, and reliable in object detection.
- **Industrial sensors**  
Inductive, capacitive, and ultrasonic – ideal for monitoring position, presence, or material level.
- **Measuring systems and encoders**  
They guarantee precision in position and displacement measurements.
- **Vision devices and scanners**  
Increasingly used for quality control and product identification.

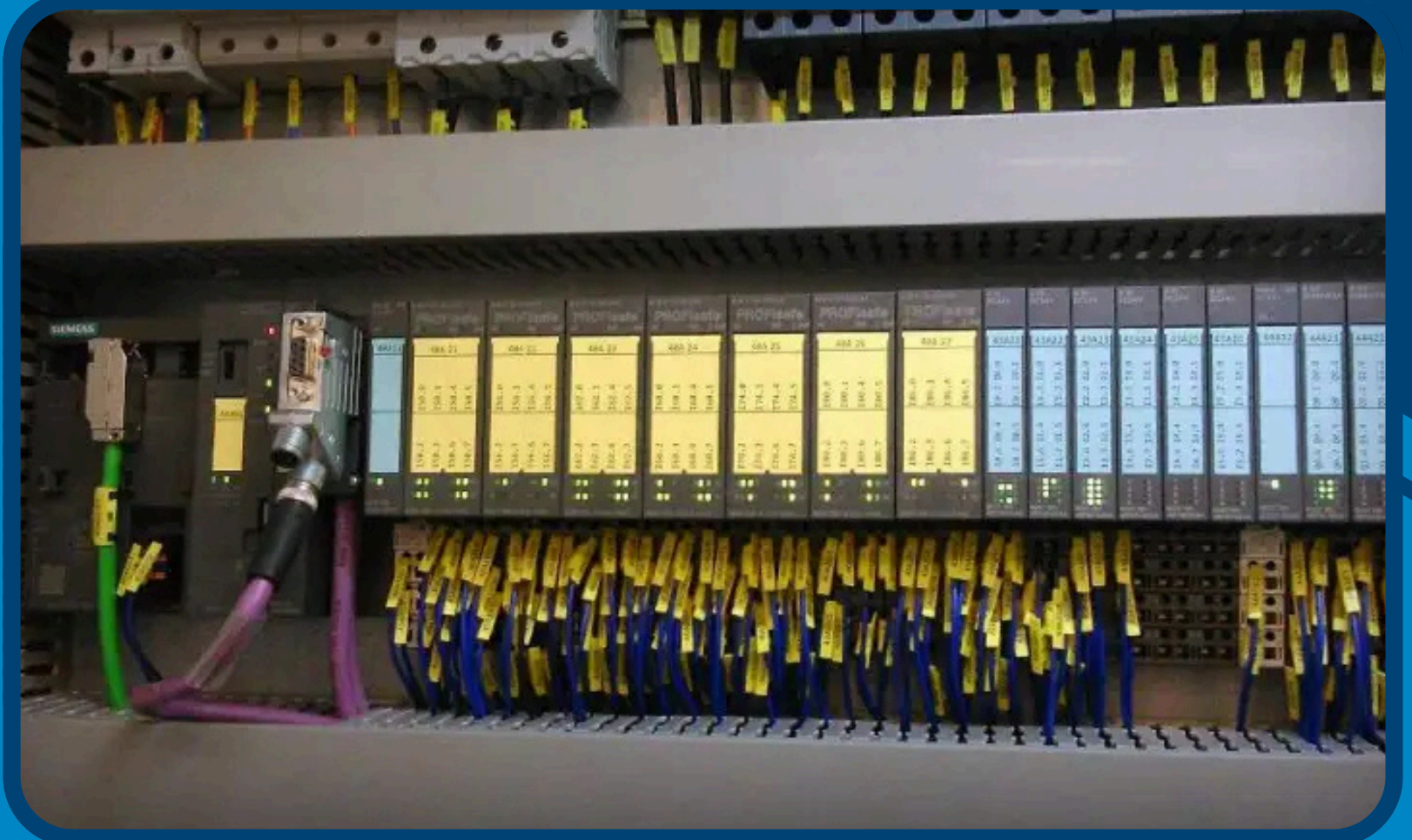


✉ [info@automationtrader.com](mailto:info@automationtrader.com)

☎ +48 32 438 43 56 / +48 799 361 559

# INDUSTRIAL SAFETY

- **Light barriers and curtains**  
They create invisible safety zones around machinery.
- **Safety controllers**  
They manage signals from protective devices and ensure the correct system response.
- **Safety switches**  
Used in emergency situations, they allow for the immediate stoppage of machine operation.
- **Laser scanners**  
They monitor the area around machines in 2D and automatically slow down or stop operation when a zone violation is detected.



✉ [info@automationtrader.com](mailto:info@automationtrader.com)

☎ +48 32 438 43 56 / +48 799 361 559

# MECHANICAL COMPONENTS

- **Spare parts for robots**  
Available for many popular brands, ideal for maintaining production continuity.
- **Pneumatic and hydraulic components**  
Valves, actuators, hoses - everything needed for power and motion control.
- **Precision elements**  
Guideways, ball screws, couplings, and other components that ensure operational accuracy.
- **Bearings and linear technology**  
A wide range of rolling and sliding components that ensure smooth motion and long machine life.



✉ [info@automationtrader.com](mailto:info@automationtrader.com)

☎ +48 32 438 43 56 / +48 799 361 559

# INDUSTRIAL ELECTRONICS

- **Switchboards and control cabinets**  
Ready for the installation of control and power systems.
- **Connectors and cabling**  
From simple wires to advanced industrial connection systems.
- **Relays and contactors**  
Reliable in controlling and protecting electrical circuits.
- **Installation components**  
Terminal blocks, cable ducts, markers – everything needed for an organized installation.



✉ [info@automationtrader.com](mailto:info@automationtrader.com)

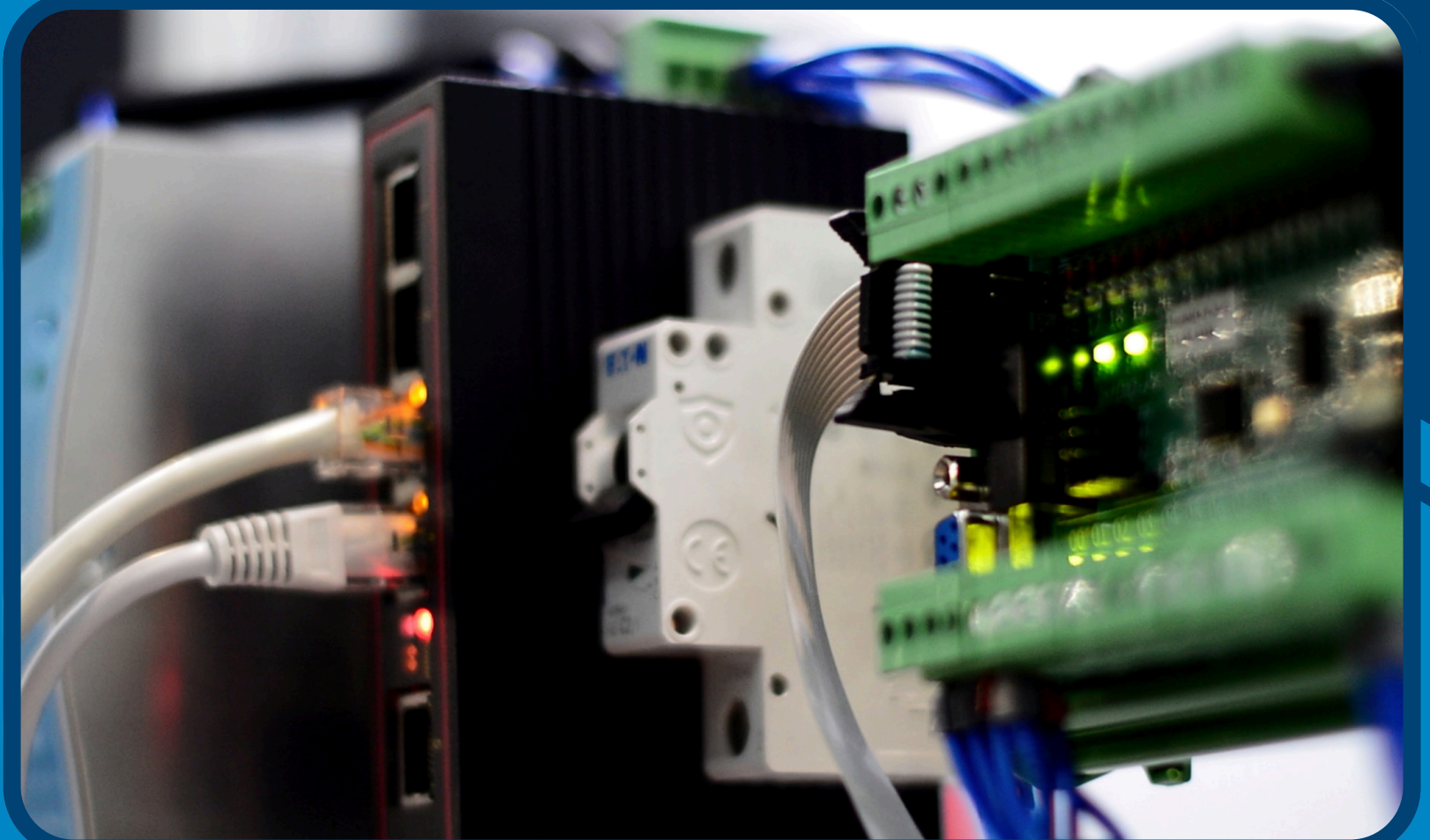
☎ +48 32 438 43 56 / +48 799 361 559

# INDUSTRIAL ELECTRONICS

- **Mainboards and I/O modules**  
For expanding automation systems and connecting sensors, actuators, and executive devices.
- **HMI panels and LCD displays**  
Enable intuitive machine control and process data visualization.
- **Communication modules**  
For various industrial network standards: Profibus, EtherNet/IP, Modbus, and others.
- **Industrial power supplies**  
Reliable and resistant to harsh conditions, ensuring the continuity of system operations.

✉ [info@automationtrader.com](mailto:info@automationtrader.com)

☎ +48 32 438 43 56 / +48 799 361 559



# ELECTRICAL COMPONENTS

- **Switchboards and control cabinets**  
Ready for the installation of control and power systems.
- **Connectors and cabling**  
From simple wires to advanced industrial connection systems.
- **Relays and contactors**  
Reliable in controlling and protecting electrical circuits.
- **Installation components**  
Terminal blocks, cable ducts, markers – everything needed for an organized installation.



✉ [info@automationtrader.com](mailto:info@automationtrader.com)

☎ +48 32 438 43 56 / +48 799 361 559

# LEADING MANUFACTURERS IN OUR RANGE

**SIEMENS**

*Allen-Bradley*

**YASKAWA**

**KEYENCE**

**OMRON**

**Schneider**  
Electric

**FANUC**

 **MITSUBISHI  
ELECTRIC**

**HEIDENHAIN**

**rexroth**  
A Bosch Company

**FESTO**

**ABB**

# LEADING MANUFACTURERS IN OUR RANGE

  
**BAUMÜLLER**

**BALLUFF**

**EATON**

*Danfoss*

**EUCHNER**

**Lenze**

 **Telemecanique**

**Leuze**

**TURCK**

 **PHOENIX  
CONTACT**

**Panasonic®**

**PILZ**

THE SPIRIT OF SAFETY

# CONTACT US

**Reach out. Connect. Let's work together.**



+48 32 438 43 56



+48 799 361 559



[www.automationtrader.com](http://www.automationtrader.com)



[info@automationtrader.com](mailto:info@automationtrader.com)

**Automation Trader Sp. z o.o.**

Browarowa 21,  
43-100 Tychy, Poland

VAT ID: PL6463009354

REGON: 527345886

DUNS: 427734105